

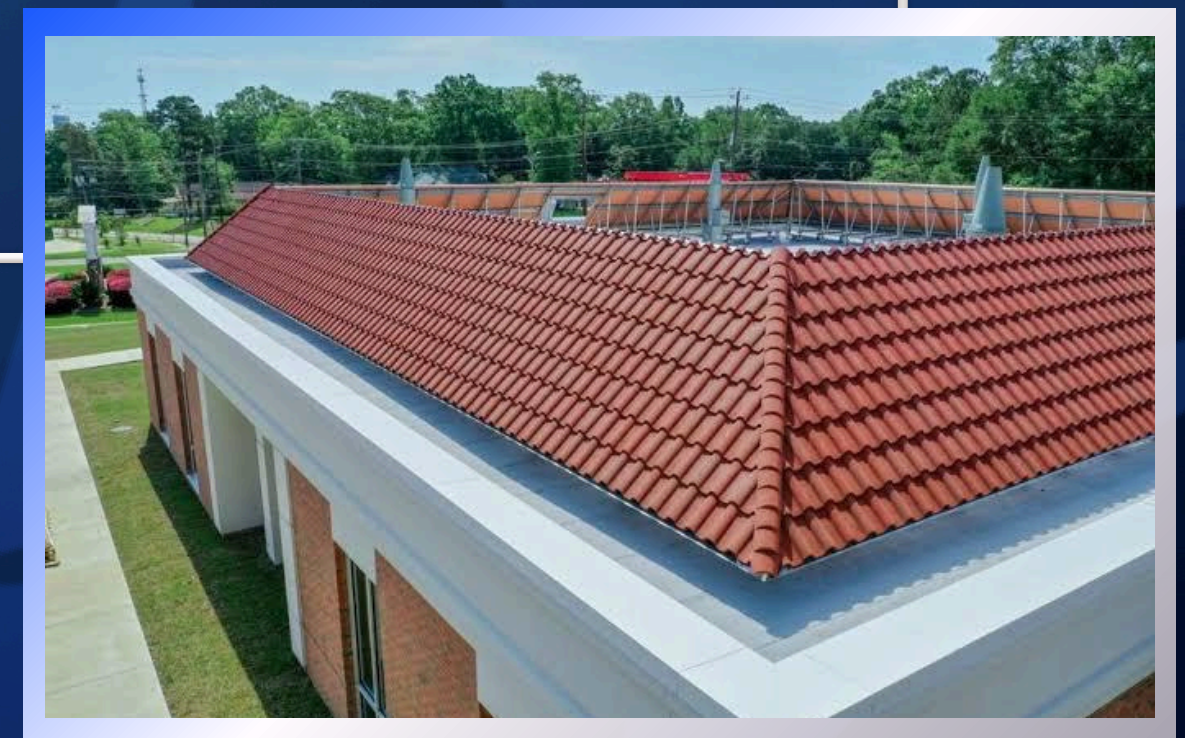
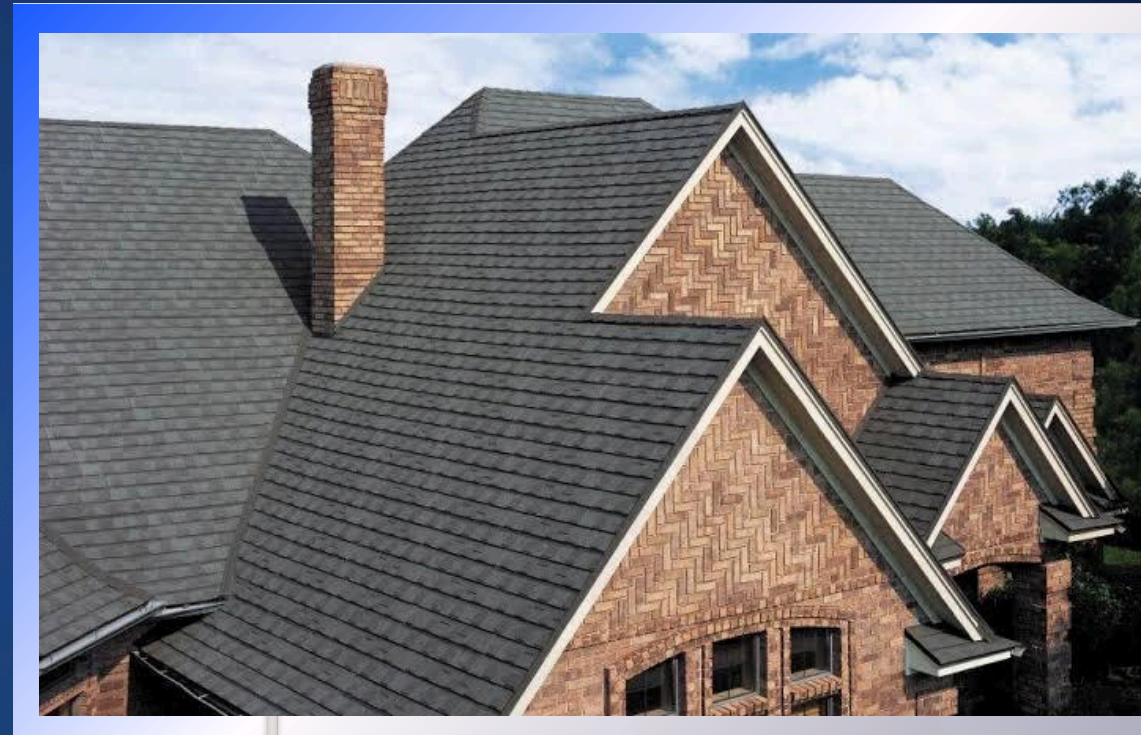




## MAGNIFICENT ENVELOPING ARTISTRY

**VICKMAX PROUDLY DISTRIBUTES NEW ZEALAND STANDARD ROOFING SYSTEMS, KNOWN FOR ITS HERITAGE AND PERFORMANCE. VICKMAX ROOFING TILES UTILIZE UNIQUE TECHNOLOGY FOR SUPERIOR PERFORMANCE AT AN AFFORDABLE PRICE.**

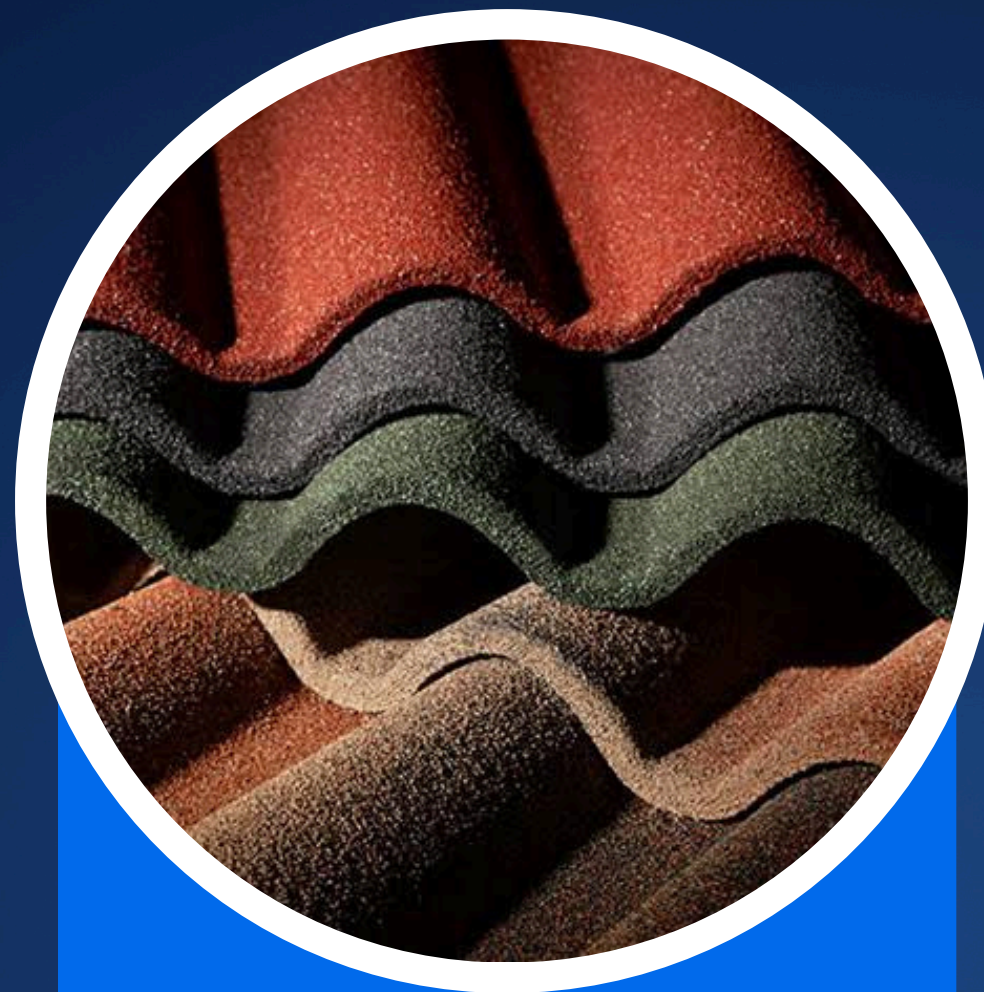
**WITH OVER 10 YEARS OF EXPERIENCE IN ROOF INSTALLATION, OUR ROOFS HAVE CONSISTENTLY OUTPERFORMED THE COMPETITION. THIS BROCHURE DETAILS WHAT SETS VICKMAX ROOFS APART FROM THE REST.**





## **ALU-ZINC STEEL**

**VICKMAX ROOFING SYSTEMS, MADE FROM ALU-ZINC STEEL, EXTEND ROOF LIFESPAN BY 6-9 TIMES COMPARED TO GALVANIZED STEEL. THIS MATERIAL OFFERS RUST PROTECTION, PARTICULARLY IN COASTAL AREAS, MAKING VICKMAX AN IDEAL CHOICE FOR DURABILITY.**

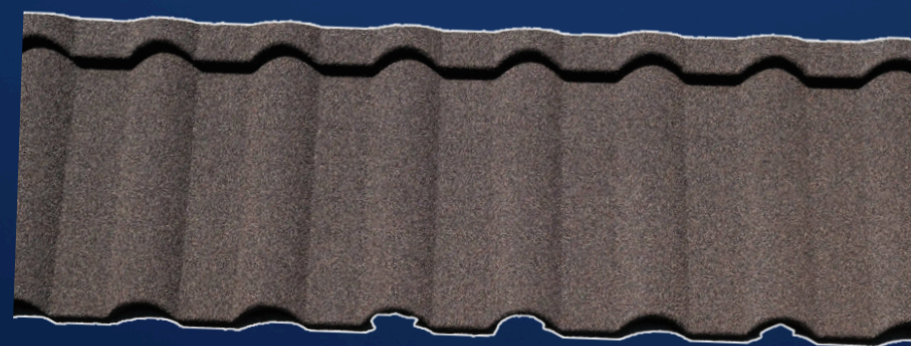


## **NATURAL STONE**

**THE VICKMAX ROOF TILES FEATURE A NATURAL VOLCANIC STONE COATING THAT MEETS NEW ZEALAND STANDARDS, PROVIDING STRONG PROTECTION AGAINST EXTREME WEATHER. THIS NATURAL STONE CONTRIBUTES TO THE ROOFING SYSTEM'S UNIQUE APPEARANCE AND VIBRANT COLOR, WHICH REMAINS CONSISTENT OVER TIME DUE TO THE HIGH-QUALITY STONE CHIP USED.**



**NATURAL STONE**

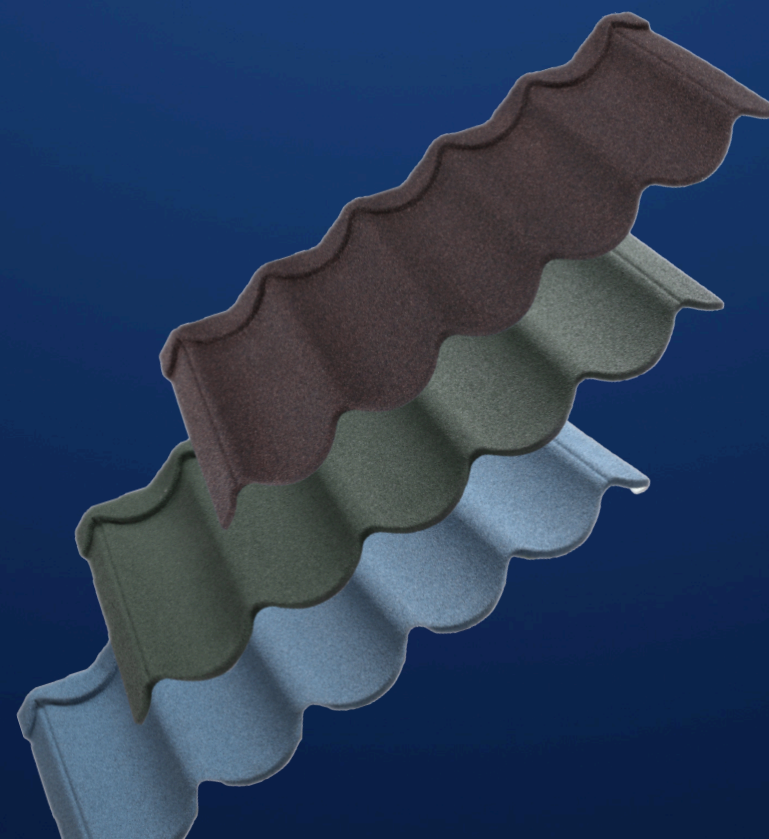


<b>PRODUCT NAME</b>	<b>MILANO TILE</b>
<b>TILES/SQ.M.</b>	<b>2.08PCS</b>
<b>TILE SIZE</b>	<b>1340x420mm</b>
<b>EFFECTIVE SIZE</b>	<b>1290x370mm</b>
<b>THICKNESS</b>	<b>0.35mm,0.40mm,0.45mm, 0.50mm,0.55mm</b>

**MILANO TILE**



**MILANO TILE**



<b>PRODUCT NAME</b>	<b>BOND TILE</b>
<b>TILES/SQ.M.</b>	<b>2.08PCS</b>
<b>TILE SIZE</b>	<b>1340x420mm</b>
<b>EFFECTIVE SIZE</b>	<b>1290x370mm</b>
<b>THICKNESS</b>	<b>0.35-0.55mm</b>

**BOND TILE**



**BOND TILE**



<b>PRODUCT NAME</b>	<b>CLASSICAL TILE</b>
<b>TILES/SQ.M.</b>	<b>2.08PCS</b>
<b>TILE SIZE</b>	<b>1340x420mm</b>
<b>EFFECTIVE SIZE</b>	<b>1290x370mm</b>
<b>THICKNESS</b>	<b>0.35-0.55mm</b>

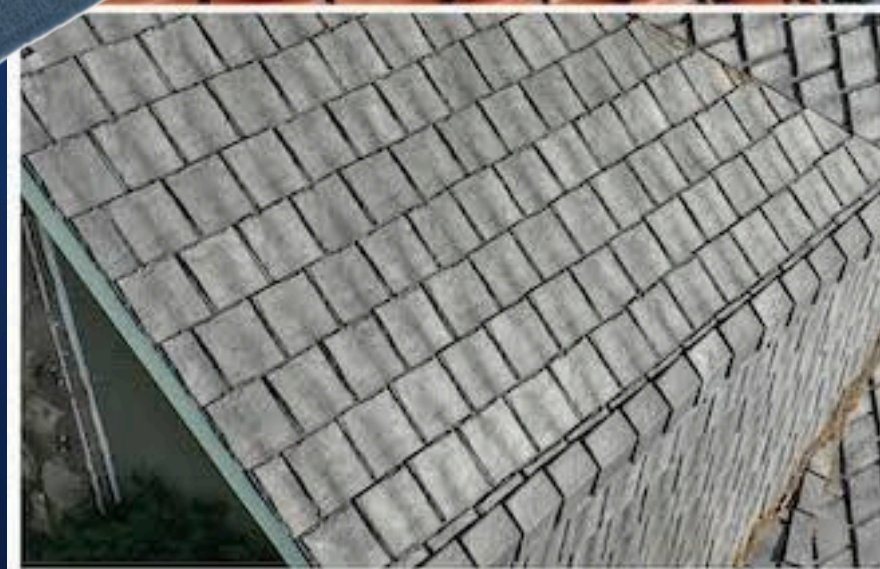
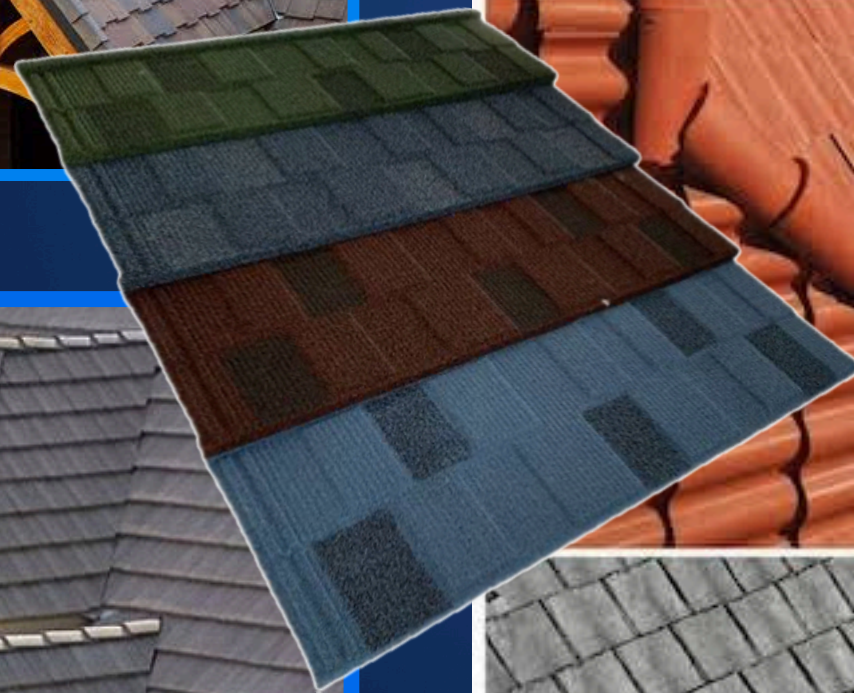
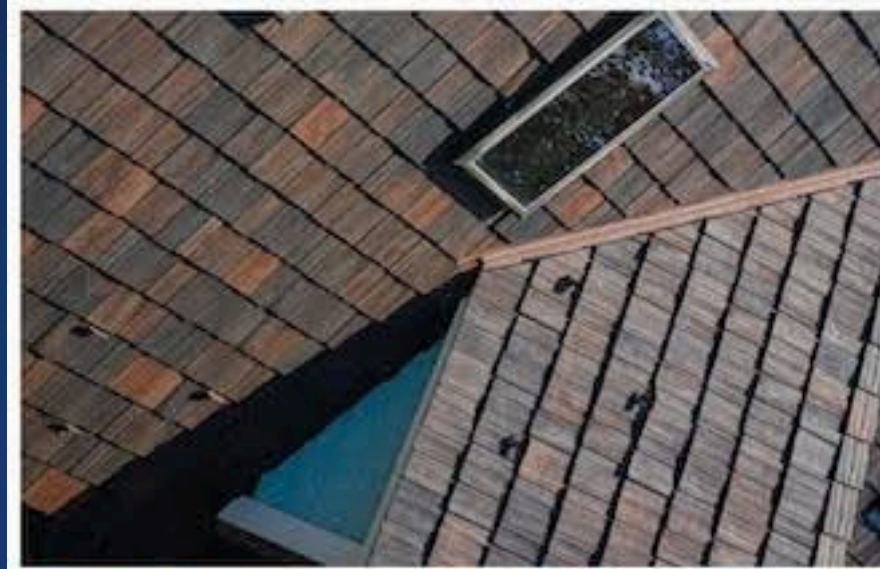
**CLASSICAL TILE**





**CLASSICAL TILE**





<b>PRODUCT NAME</b>	<b>SHINGLES TILE</b>
<b>TILES/SQ.M.</b>	<b>2.08PCS</b>
<b>TILE SIZE</b>	<b>1340x420mm</b>
<b>EFFECTIVE SIZE</b>	<b>1290x370mm</b>
<b>THICKNESS</b>	<b>0.35-0.55mm</b>



**SHINGLES TILE**



<b>PRODUCT NAME</b>	<b>GOLAN TILE</b>
<b>TILES/SQ.M.</b>	<b>2.08PCS</b>
<b>TILE SIZE</b>	<b>1340x420mm</b>
<b>EFFECTIVE SIZE</b>	<b>1290x370mm</b>
<b>THICKNESS</b>	<b>0.35-0.55mm</b>

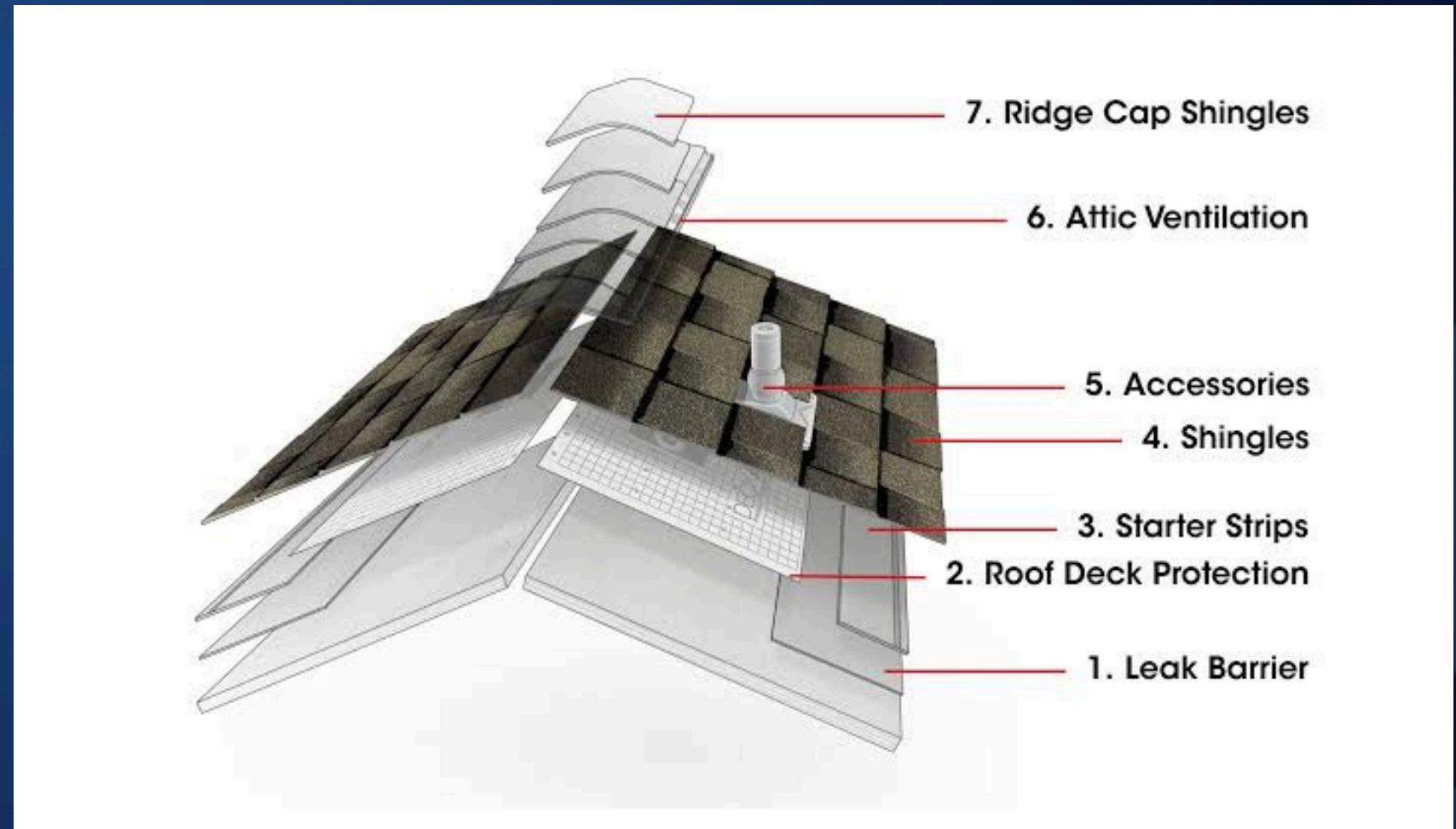
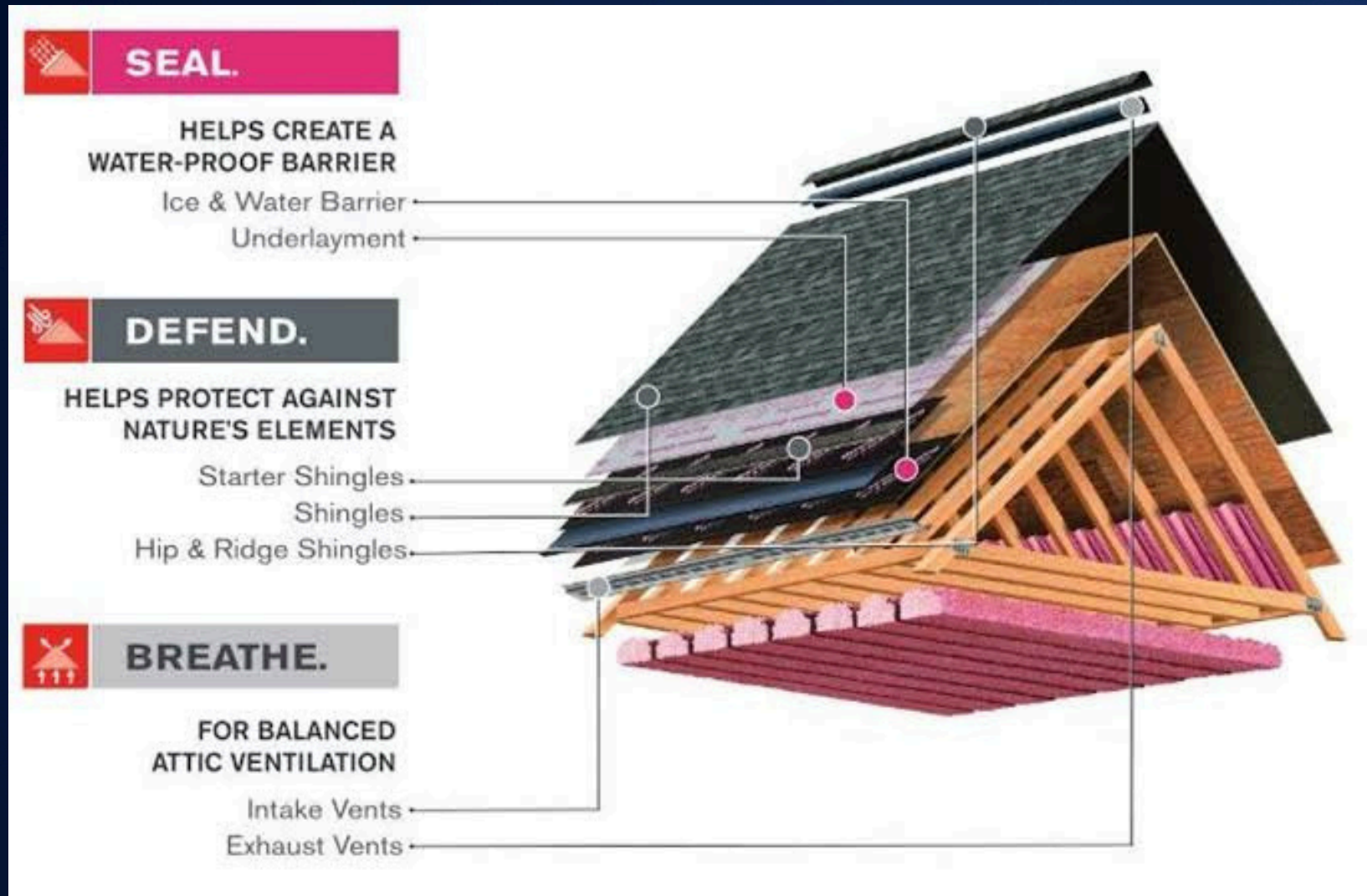
**GOLAN TILE**

# AVAILABLE COLOR



# ROOFING SYSTEM







**VICKMAX**<sup>®</sup>  
ROOFING SYSTEM







## WEIGHT

EACH TILE WEIGHS 2.9KG, ALLOWING FOR STRUCTURAL SAVINGS, EASY TRANSPORT, AND QUICK INSTALLATION.



## EASY TRANSPORT

VICKMAX IS EASIER TO TRANSPORT THAN CLAY AND CONCRETE TILES, AS IT WON'T BREAK OR CRACK DURING TRANSIT.



**VICKMAX**<sup>®</sup>  
ROOFING SYSTEM



## FIRE RESISTANCE

VICKMAX ROOF TILES ARE FIRE-RESISTANT, SUITABLE FOR RESIDENTIAL AND COMMERCIAL USE, AND TESTED TO FNE10511.



## FAST INSTALLATION

OUR TILES ARE LARGER, LEADING TO FEWER TILES NEEDED AND FASTER INSTALLATION.



## HERITAGE

YOU CAN RELY ON VICKMAX ROOFING SYSTEM, WHICH HAS BEEN PRODUCING STONE-COATED ROOFS FOR 10 YEARS.



## SECURITY

VICKMAX TILES ARE TIGHTLY SECURED TO ADJACENT TILES AND BATTENS, ENSURING HIGH SECURITY AGAINST INTRUDERS AND STRONG WINDS.



 [WWW.VICKMAX.COM](http://WWW.VICKMAX.COM)  0813 041 6936

  @VICKMAX\_

